



4590 N. 11000 W Rd.

Bonfield, IL 60913

(815) 426-2330

[www.ndymfg.com](http://www.ndymfg.com)

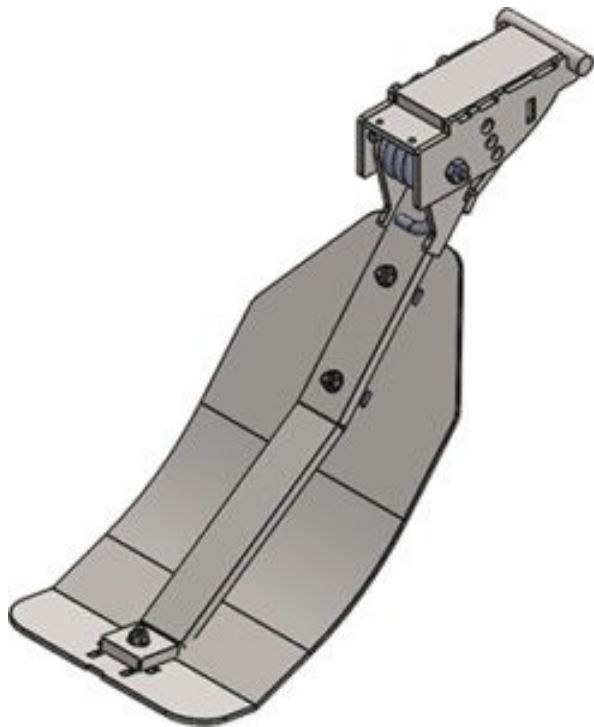
[sales@ndymfg.com](mailto:sales@ndymfg.com)

Capello/ Lexion/ Claas Corn Head

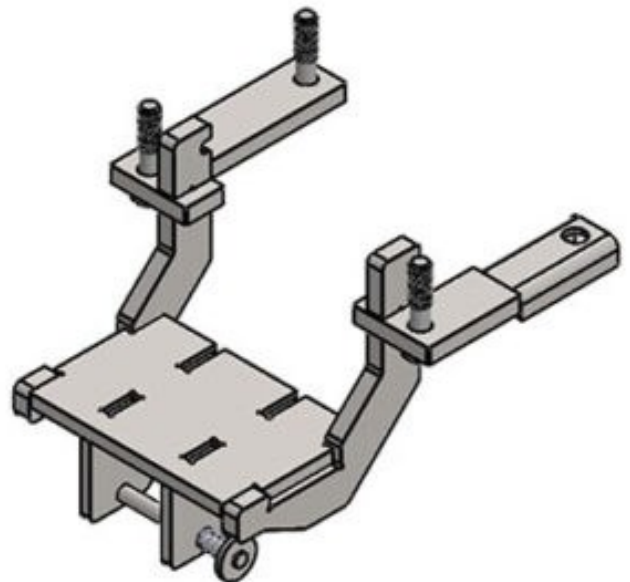
Chopping & Non-Chopping

All Years

20AS-AR552

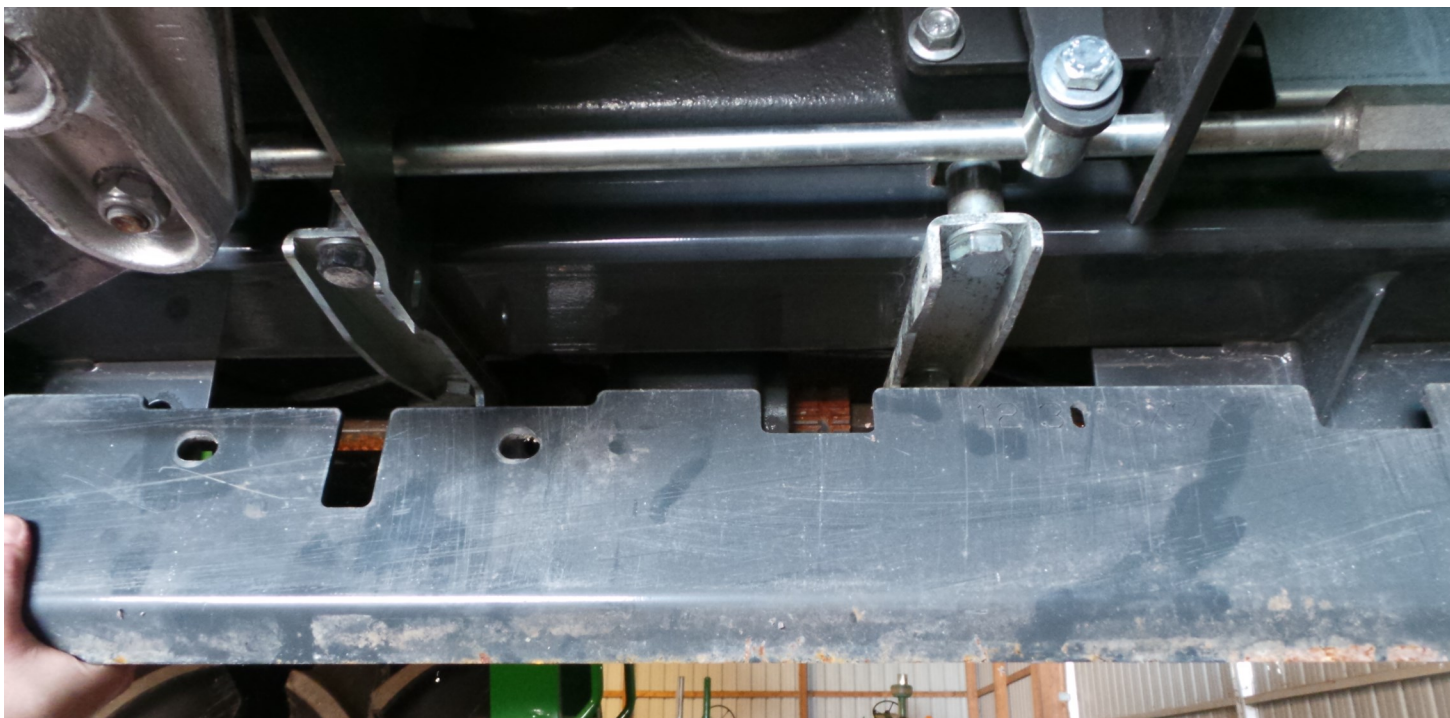


CAPLX-MA

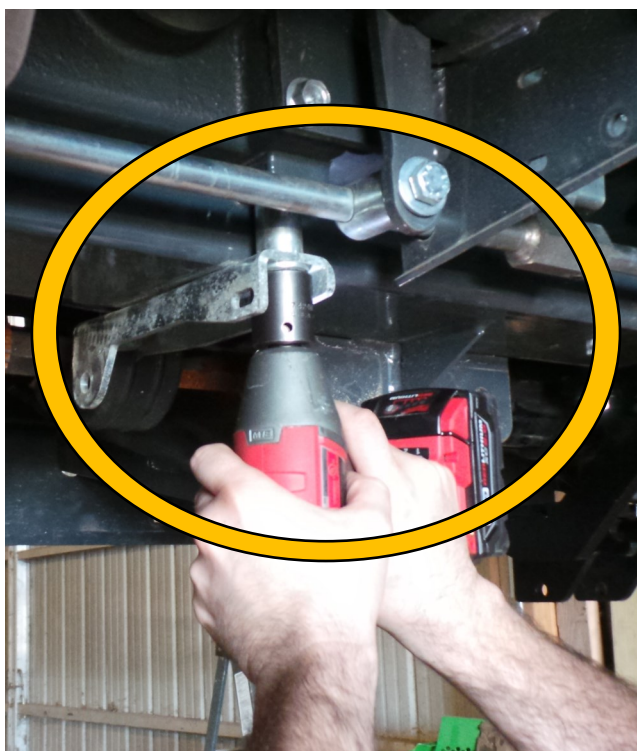
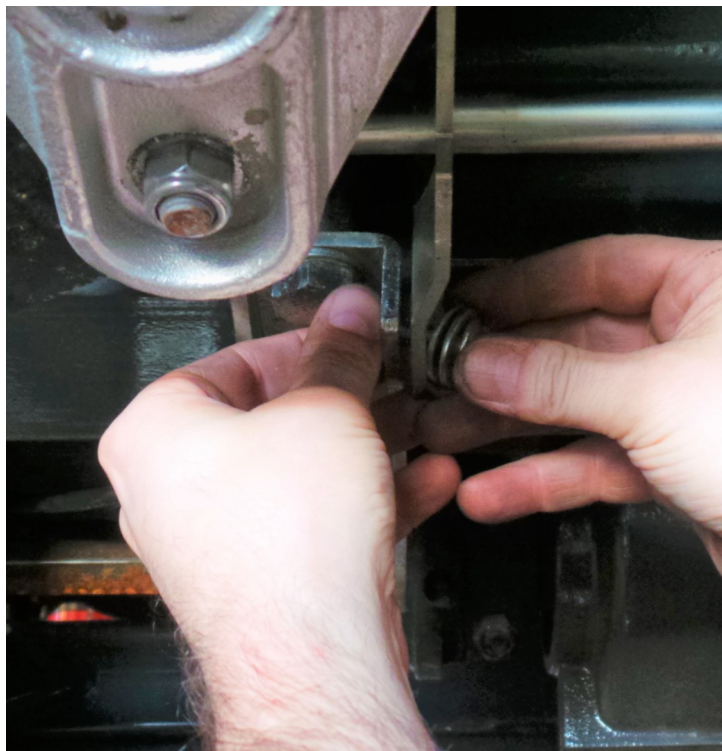


## **Capello / Lexion Installation Instructions**

- 1. Remove the existing guard from the bottom side of the corn head**

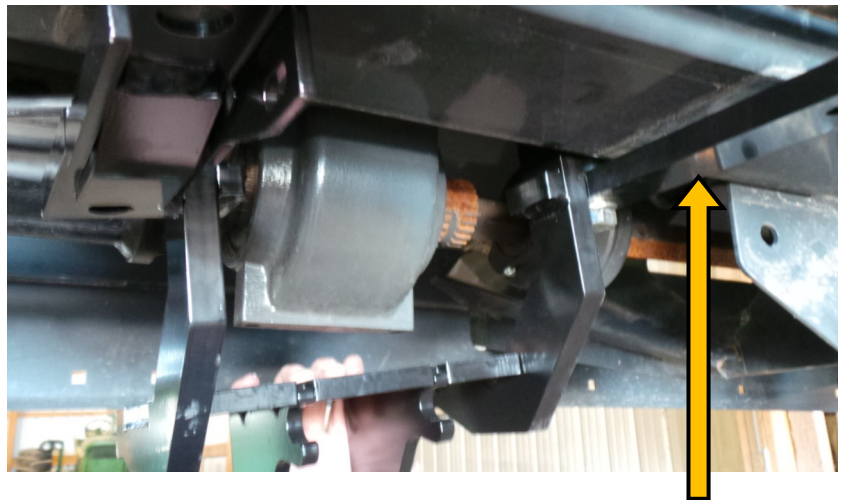


- 2. Unbolt gearbox channel brackets and remove**





**3. Place NDY's mount and  
install bolts  
(3 new supplied - 1 reused)**



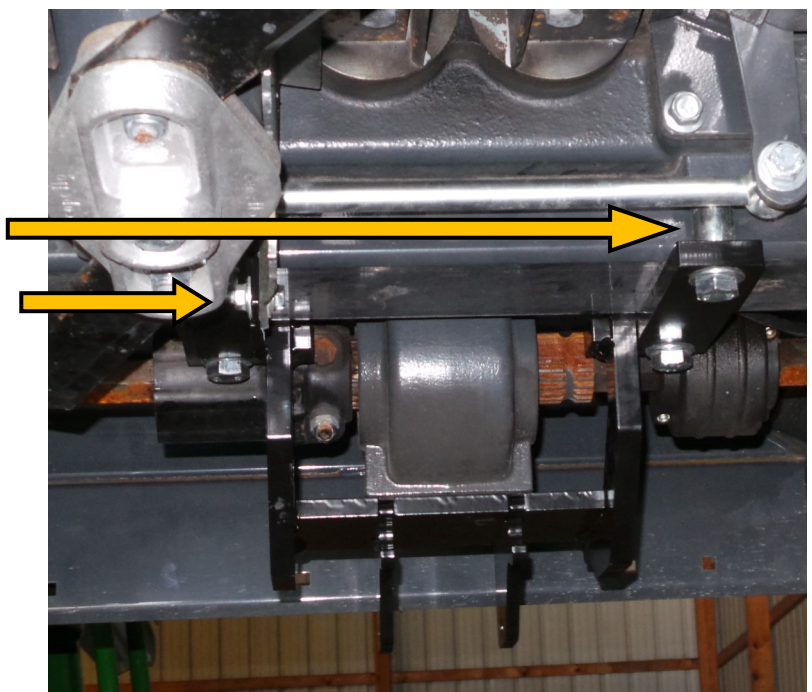
***\*\*Make sure bars are flush to tubing before tightening***

***Make sure to clear any cables  
(such as header height) before  
tightening***



**4. Bushings need to be in place  
when tightening supplied bolts  
(reuse existing washers)**

***\*\*Reuse bolts from step 2  
for front corner of gearbox***



## 5. Reinstall existing guards

