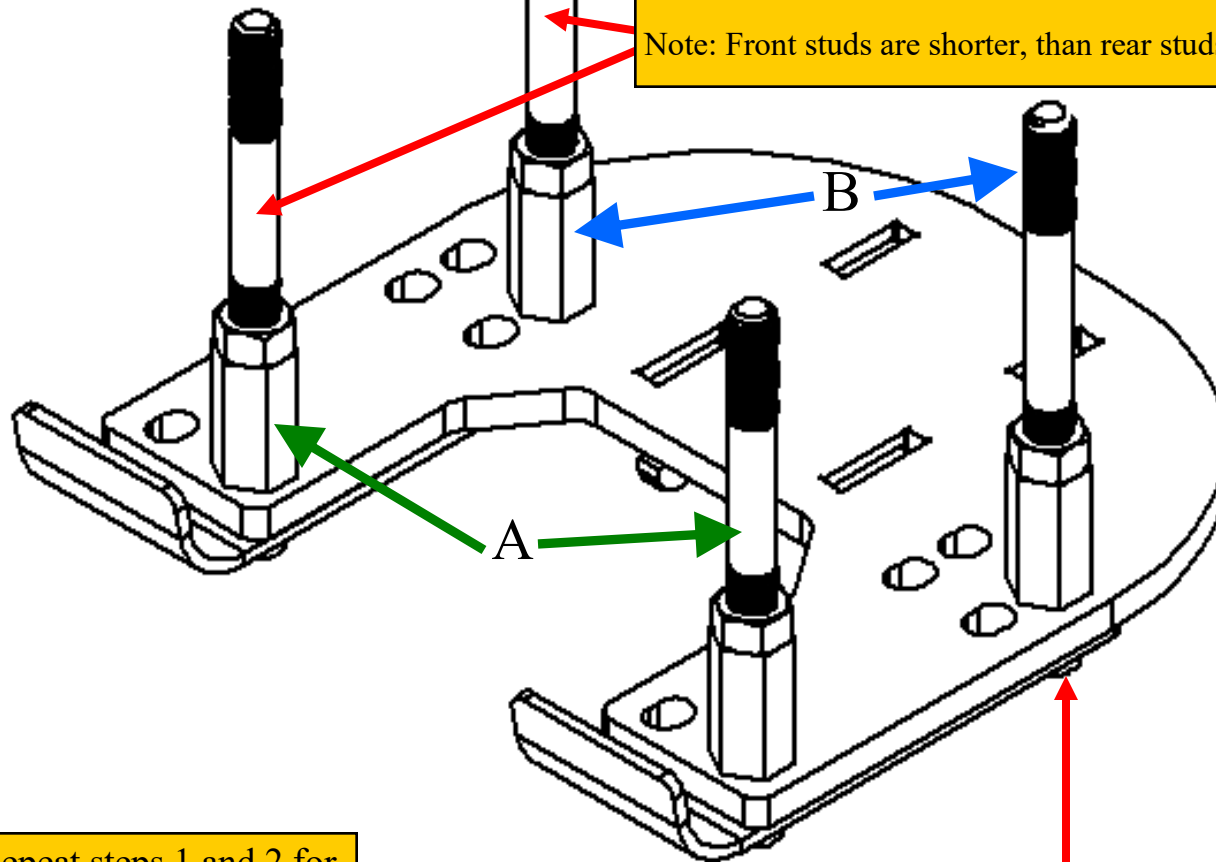


1- Remove existing gearbox bolts from one side of one row.

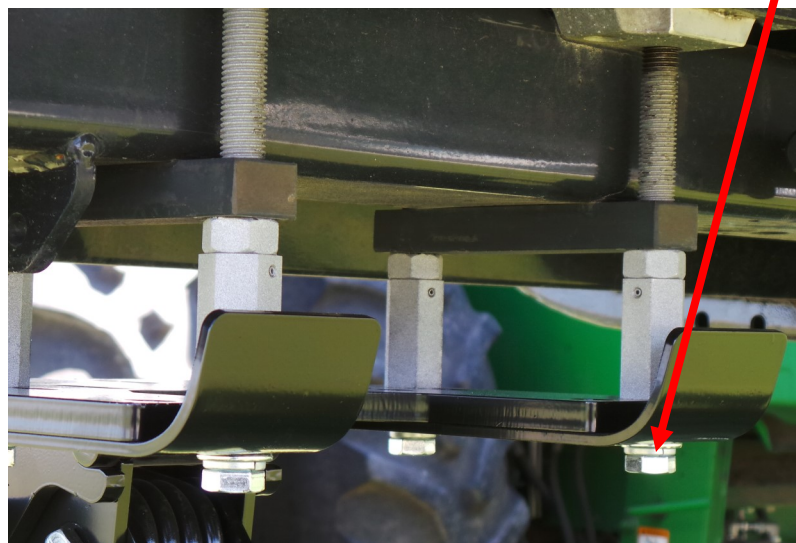
2- Keeping existing strap in place, screw in NDY's hex studs. #20-XXX for the front, #20-XXX for the rear.

Note: Front studs are shorter, than rear studs.



3- Repeat steps 1 and 2 for other side of gearbox.

4- Use the 1/2-13 x 1.5" hex flange bolts to attach ski's and mount to hex studs.



All NorthStar and Patriot

Location	Part #		
A	20-910	120mm	All Years
B	20-911	130mm	All Years

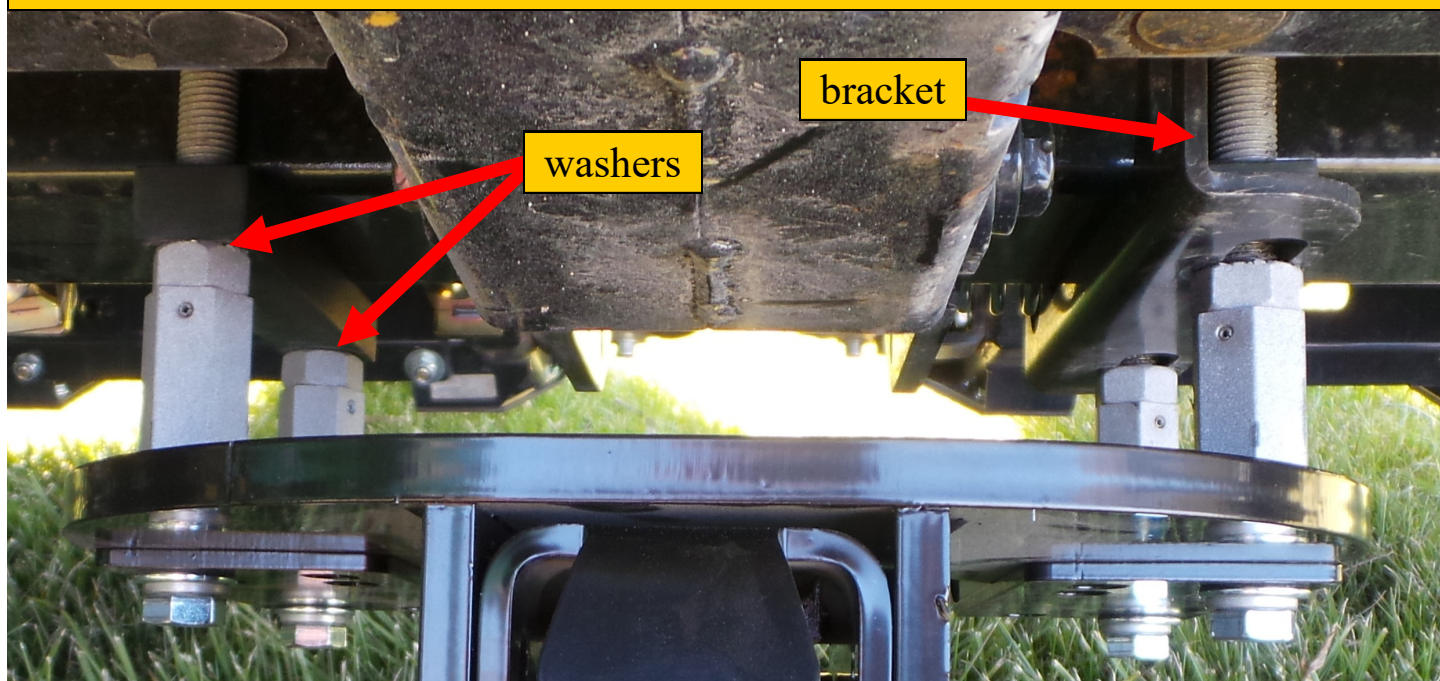
Rota Disc

Location	Part #	Length	Year
A	20-910	120mm	2009 & Older
B	20-911	130mm	2010 & Newer
A	20-912	110mm	2010 & Newer
B	20-913	140mm	2009 & Older

Horizon

Location	Part #	Length	Year
A	20-910	120mm	All Years
B	20-913	140mm	All Years

When there is an extra bracket on one side (i.e. Hydraulic deck plate guard, spring stop etc.) you'll need to add provided washers to the opposite side (between the strap and hex nut) so that the mount will be level.



For ease of installation, before removing existing gearbox bolts, place a clamp on this side of bracket to keep spring compressed.

