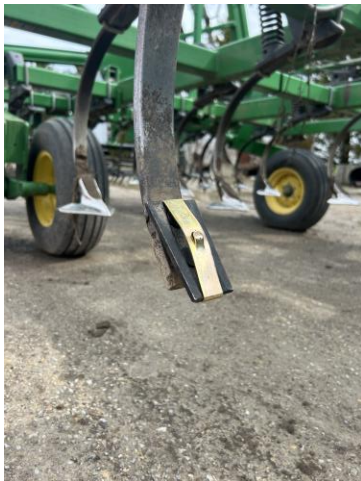




# Ultimate Knock-On Sweeps Installation Guide

## Step One:

Be sure to check if springs and clips are bent or damaged. Be sure to clean any dirt or debris from the clip.



## Step Two:

Grab the shovel with both hands and slide it onto the clip. Be sure to slide it all the way up until the spring locks into place.

**DO NOT HIT THE POINT!**



## Step Three:

Grab the shovel and try to slide it off the clip to ensure the spring is locked into place.





# Ultimate Knock-On Sweeps Care Guide

## **DO NOT HIT THE POINT**

Avoid using a hammer to hit points onto the clip. If you are unable to slide it on by hand there is damage or an issue with your clip.

## **DO NOT LET WEIGHT OF CULTIVATOR REST ON THE SHOVELS**

Setting the weight of the cultivator on the shovels while on hard surfaces like concrete or asphalt may cause damage to the points.

## **CLEAN SHANK AND CLIP**

Clean the shank and clip free from dirt or debris before installing. This may cause issues while trying to install the shovels.

## **CHECK YOUR EQUIPMENT**

Although these shovels last a long time, they do still accumulate wear. Regularly check your equipment and shovels to ensure you get the best out of your machine

## **LEVEL YOUR TILLAGE TOOL**

Leveling your machine from front to back will get you the best results from our shovels. A level machine will get an even wear along all the shovels.

**For any further questions or concerns, contact Richmond Brothers Equipment at (989) 453-7097**



# Ultimate Bolt-On Sweeps Installation Guide

## Step One:

Clean the shank of any dirt, rocks, rust or any other types of debris. Without a clean surface the sweep has the possibility to crack.

## Step Two:

Fit the bolts through the shovel. Use grade 5 or higher bolts. Put the sweep onto the shank and fit the bolts through the shank.

## Step Three:

Spin the flange nylock nuts onto the bolts. Torque the nuts down to 42 foot pounds. Re-torque after 200-300 acres.

**DO NOT OVERTIGHTEN**

**C-Shank**



**S-Tine**



**C-Shank**



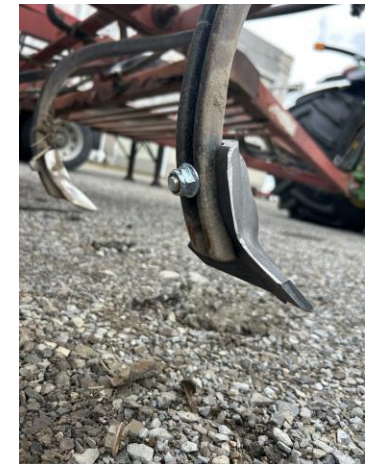
**S-Tine**



**C-Shank**



**S-Tine**





# Ultimate Bolt-On Sweeps Care Guide

## **DO NOT HIT THE POINT**

Handle shovels with care. Do not throw, drop or strike the sweeps with an object. This may cause sweeps to crack.

## **CHECK YOUR EQUIPMENT**

Although these shovels last a long time, they do still accumulate wear. Regularly check your equipment and shovels to ensure you get the best out of your machine.

## **DO NOT LET WEIGHT OF CULTIVATOR REST ON THE SHOVELS**

Setting the weight of the cultivator on the shovels while on hard surfaces like concrete or asphalt may cause damage to the points.

## **DO NOT OVERTIGHTEN**

Torque nuts to 42 foot pounds. Do not use a 1/2" drive or larger impact to install these. Over tightening will cause sweeps to crack or break.

## **CLEAN SHANK OF DEBRIS**

Clean the shank free from dirt or debris before installing. This may cause issues while trying to install the shovels.

## **LEVEL YOUR TILLAGE TOOL**

Leveling your machine from front to back will get you the best results from our shovels. A level machine will get an even wear along all the shovels.

**For any further questions or concerns, contact Richmond Brothers Equipment at (989) 453-7097**



# Ultimate Chisel Plow Points Installation Guide

## Step One:

Clean the shank of any dirt, rocks, rust or any other types of debris. Without a clean surface the point has the possibility to crack.

## Step Two:

Fit the 1/2" bolts through the point. Use grade 8 bolts. Put the point onto the shank and fit the bolts through the shank.

## Step Three:

Spin the flange nylock nuts onto the bolts. Torque the nuts down to 42 foot pounds. Re-torque after 200-300 acres.

**DO NOT OVERTIGHTEN**

**Winged**



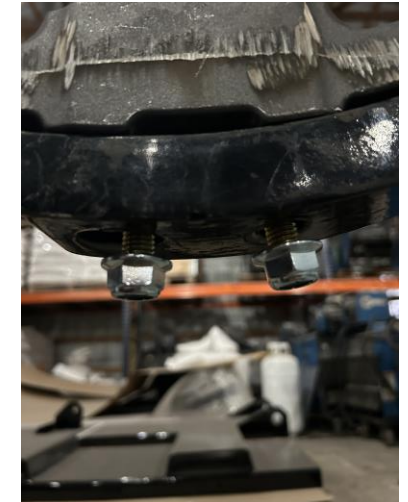
**Reversible**



**Winged**



**Reversible**





# Ultimate Chisel Plow Points Care Guide

## **DO NOT HIT THE POINT**

Handle points with care. Do not throw, drop or strike the points with an object. This may cause points to crack.

## **CHECK YOUR EQUIPMENT**

Although these points last a long time, they do still accumulate wear. Regularly check your equipment and points to ensure you get the best out of your machine.

## **DO NOT LET WEIGHT OF MACHINE REST ON THE POINTS**

Setting the weight of the machine on the points while on hard surfaces like concrete or asphalt may cause damage to the points.

## **DO NOT OVERTIGHTEN**

Torque nuts to 42 foot pounds. Do not use a 1/2" drive or larger impact to install these. Over tightening will cause points to crack or break.

## **CLEAN SHANK OF DEBRIS**

Clean the shank free from dirt or debris before installing. This may cause issues while trying to install the points.

## **LEVEL YOUR TILLAGE TOOL**

Leveling your machine from front to back will get you the best results from our points. A level machine will get an even wear along all the points.

**For any further questions or concerns, contact Richmond Brothers Equipment at (989) 453-7097**

# Ultimate Ripper Points Installation Guide

## Step One:

Clean the shank of any dirt, rocks, rust or any other types of debris. Without a clean surface the point has the possibility to crack or will not fit correctly.

## Step Two:

Fit the ripper point to the shank and slide the bolt or roll pin through the hole. Tighten bolts or fasten the roll pin.

## Step Three:

If using a shank saver be sure that there is very little tolerance between the point and the shank saver.

**Dominator Style**



**2 Hole**

**Case Style**



**1 Hole**

**Dominator Style**



**2 Hole**

**Case Style**



**1 Hole**

**Dominator Style**



**2 Hole**

**Case Style**



**1 Hole**



# Ultimate Ripper Points Care Guide

## **DO NOT HIT THE POINT**

Handle points with care. Do not throw, drop or strike the points with an object. This may cause points to crack.

## **CHECK YOUR EQUIPMENT**

Although these points last a long time, they do still accumulate wear. Regularly check your equipment and points to ensure you get the best out of your machine.

## **DO NOT LET WEIGHT OF MACHINE REST ON THE POINTS**

Setting the weight of the machine on the points while on hard surfaces like concrete or asphalt may cause damage to the points.

## **DO NOT OVERTIGHTEN**

Torque nuts to 42 foot pounds. Do not use a 1/2" drive or larger impact to install these. Over tightening will cause points to crack or break.

## **CLEAN SHANK OF DEBRIS**

Clean the shank free from dirt or debris before installing. This may cause issues while trying to install the points.

## **LEVEL YOUR TILLAGE TOOL**

Leveling your machine from front to back will get you the best results from our points. A level machine will get an even wear along all the points.

**For any further questions or concerns, contact Richmond Brothers Equipment at (989) 453-7097**